

IMPORTANT INDUSTRY UPDATE

General Broach Company is the New and Established Parts Source for:



Newcor Machine Tool Company

Subsidiaries Of  Utica Enterprises, Inc.

ABOUT GENERAL BROACH



General Broach Company, a member of the Utica Enterprises family of companies, is a leading manufacturer of broaching machines, and is equipped to supply transfer lines, dials, prism and special purpose machines.

General Broach maintains a huge library of machine and componentry blueprints. We also have a full-service field team capable of supporting your personnel, or providing complete turnkey service for a full range of needs, including installation, refurbishment and retooling.

General Broach can save you time and money!

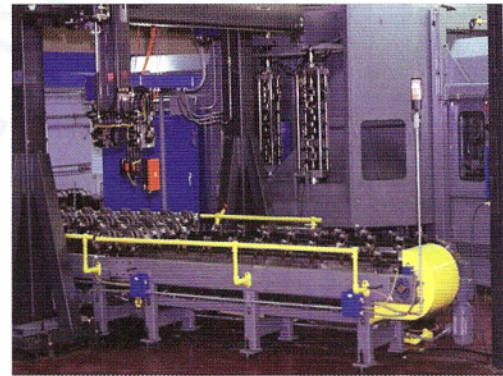
WE'VE GOT THE PARTS AND SERVICE YOU NEED

General Broach has taken over the parts inventory and supply logistics for our parent company, Utica Enterprises. Now, you can rely on General Broach to supply all your parts and service needs for Cargill, Snyder, Newcor, GBC, Utica Assembly and Robomatics machinery.

Because General Broach is a member of the Utica Enterprises family, you can expect the same excellent quality you have always known, with the rapid response of the General Broach team.

TRADITION MAKES THE DIFFERENCE

Unlike third-party vendors, General Broach has a long-standing history and familiarity with the six Utica Enterprises companies. As a member of the family network, we have a full inventory of parts, original blueprints and



access to the engineering personnel who know these machines inside and out.

You can trust General Broach to get you the right part, at the right price – on time, every time.

PARTS ARE ONLY THE BEGINNING

General Broach has a large parts inventory for the Cargill, Snyder, Newcor, GBC, Utica Assembly and Robomatics equipment, but our expertise goes well beyond simply picking and packing. We can build to print, refurbish and repair, create parts, provide engineering support, send field service experts, install parts and provide retool service.



(800) 889-7555 • www.generalbroach.com

**24-Hour Parts and Service • Reliable, Responsive, and Committed
Six Companies – One Call**

(517) 458-7555 • 307 Salisbury Street • Morenci, MI 49256